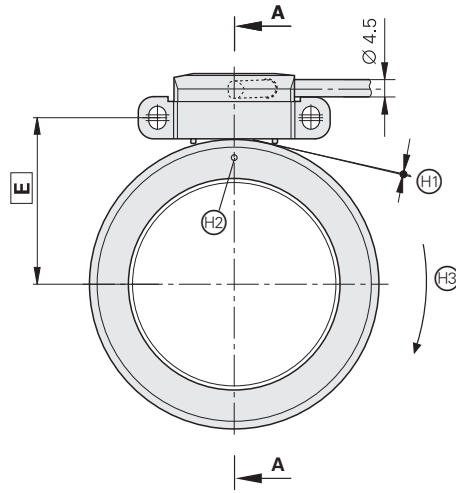
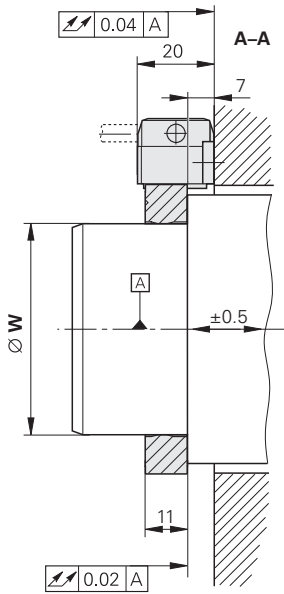
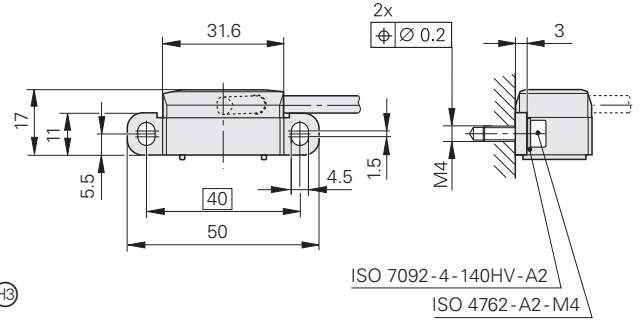


ERM 2400/ERM 2900 Series

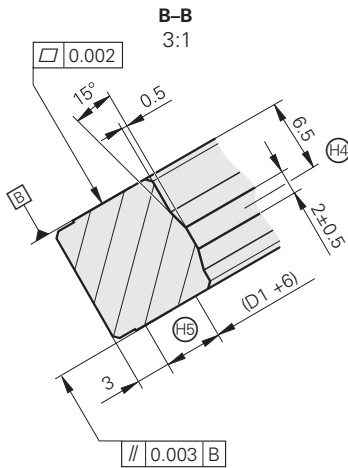
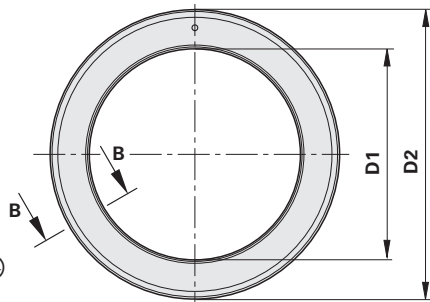
- Modular encoders
- Magnetic scanning principle
- Compact dimensions
- Two signal periods



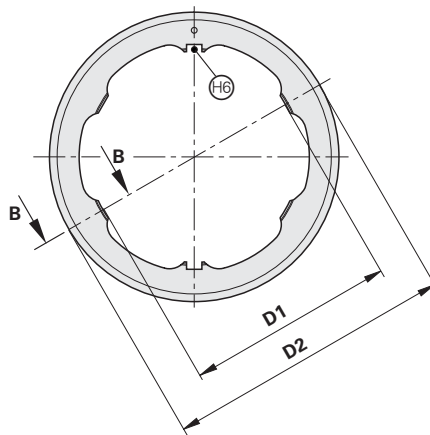
ERM 2x80 scanning head



ERM 2x04 scale drum



ERM 2405 scale drum



in mm



Tolerancing ISO 8015
ISO 2768 - m H
< 6 mm: ± 0.2 mm

- ▣ = Bearing
- ⊕ = Mounting clearance set with spacer foil
ERM 2400: 0.15 mm
ERM 2900: 0.30 mm
- ⊙ = Reference mark
- ⊕ = Positive direction of rotation for output signals
- ⊕ = Centering collar
- ⊕ = Clamping area (applies to both sides)
- ⊕ = Slot for feather key 4x4x10 (as per DIN 6885 shape A)

	D1	W	D2	E
ERM 2400	$\varnothing 40 +0.010/+0.002$	$\varnothing 40 0/-0.006$	$\varnothing 64.37$	37.9
	$\varnothing 55 +0.010/+0.002$	$\varnothing 55 0/-0.006$	$\varnothing 75.44$	43.4
ERM 2900	$\varnothing 55 +0.010/+0.002$	$\varnothing 55 0/-0.006$	$\varnothing 77.41$	44.6

Scanning head	AK ERM 2480	AK ERM 2980
Incremental signals	~ 1 V _{pp}	
Cutoff frequency -3 dB	≤ 300 kHz	
Signal period	Approx. 400 μm	Approx. 1 000 μm
Line count*	See Scale Drum	
Power supply	5 V ± 10% DC	
Current consumption	≤ 150 mA (without load)	
Electrical connection*	Cable 1 m, with or without coupling; cable outlet axial or radial	
Cable length	≤ 150 m (with HEIDENHAIN cable)	
Vibration 55 to 2000 Hz Shock 6 ms	≤ 400 m/s ² (EN 60068-2-6) ≤ 1 000 m/s ² (EN 60068-2-27)	
Operating temperature	-10 °C to 100 °C	
Protection EN 60529	IP 67	
Weight	Approx. 0.15 kg (with cable)	

Scale drum	ERM 2404		ERM 2405		ERM 2904
Measuring standard	MAGNODUR graduation				
Signal period	Approx. 400 μm				Approx. 1 000 μm
Inside diameter*	40 mm	55 mm	40 mm	55 mm	55 mm
Outside diameter	64.37 mm	75.44 mm	64.37 mm	75.44 mm	77.41 mm
Line count*	512	600	512	600	256
System accuracy¹⁾	± 43"	± 36"	± 43"	± 36"	± 70"
Accuracy of the graduation²⁾	± 17"	± 14"	± 17"	± 14"	± 15"
Reference mark	One				
Mech. permissible speed	≤ 42 000 min ⁻¹	≤ 36 000 min ⁻¹	≤ 33 000 min ⁻¹	≤ 27 000 min ⁻¹	≤ 35 000 min ⁻¹
Moment of inertia of the rotor	0.12 · 10 ⁻³ kgm ²	0.19 · 10 ⁻³ kgm ²	0.11 · 10 ⁻³ kgm ²	0.17 · 10 ⁻³ kgm ²	0.22 · 10 ⁻³ kgm ²
Permissible axial motion	± 0.5 mm				
Weight approx.	0.17 kg	0.17 kg	0.15 kg	0.15 kg	0.19 kg

* Please indicate or select when ordering. Other line counts/dimensions available upon request.

¹⁾ Before installation. Additional error caused by mounting inaccuracy and inaccuracy from the bearing of the drive shaft are not included.

²⁾ For other errors, see *Measuring Accuracy*

Representante oficial de:



HEIDENHAIN

[Argentina – Bolivia – Chile – Colombia - Costa Rica – Ecuador - El Salvador –
Guatemala – Honduras – Nicaragua – Panamá – Paraguay – Perú -
República Dominicana – Uruguay – Venezuela.]



Calle 49 N° 5764 - Villa Ballester (B1653AOX) - Prov. de Buenos Aires - ARGENTINA
Tel: (+54 11) 4768-4242 / Fax: (+54 11) 4849-1212
Mail: ventas@nakase.com.ar / Web: www.nakase.com.ar

