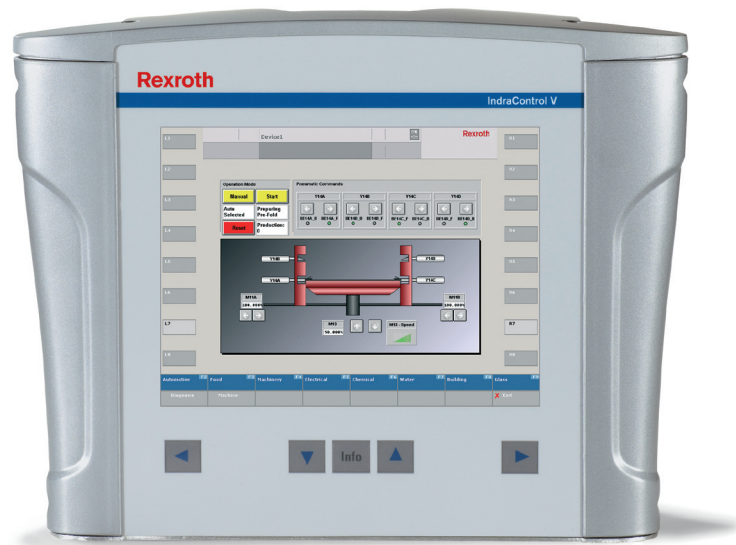
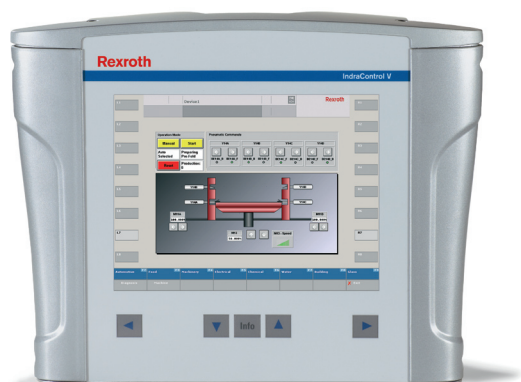


Embedded PC

# 8,4" TFT-display and SVGA-Resolution IndraControl VEP 30 CG



Embedded PC

**8,4" TFT-display and SVGA-Resolution ■ IndraControl VEP 30****CG****Documentation****Technical data**

		<b>VEP 30.2CG</b>
<b>Processor</b>		
<b>CPU</b>		Celeron 400MHz (Standard)
<b>Operating system</b>		Windows CE 4.2 (Standard)
<b>Memory</b>		
<b>Application</b>	128 MB	
<b>Flash size</b>		128 MB
<b>Slot</b>		1
<b>Display</b>		
<b>Type</b>		TFT
<b>Size</b>		8.4 "
<b>Colours / Greyscales</b>		colours
<b>Resolution</b>		800 x 600
<b>Handling</b>		
<b>Type</b>		Through virtual keyboard
<b>Handling</b>		Touch screen
<b>Interfaces</b>		
<b>Ethernet</b>		1 x Ethernet TCP/IP (Standard)
<b>USB</b>		2 x USB (Standard)
<b>Seriell</b>		1 x RS232 (Standard)
<b>Externer Servicemonitor</b>		1 x VGA (Standard)
<b>Fieldbus</b>		
<b>PROFIBUS DP</b>		1 x PROFIBUS DP-Master (Option)
<b>Electric data</b>		
<b>Voltage supply</b>	<b>U</b>	24 V DC
<b>Min.</b>	<b>U<sub>min</sub></b>	19 V DC
<b>Max.</b>	<b>U<sub>max</sub></b>	30 V DC
<b>Input Power</b>	<b>[W]</b>	53
<b>USV</b>		Short-time UPS for data backup on compact-flash

Embedded PC

**8,4" TFT-display and SVGA-Resolution ■ IndraControl VEP 30****CG**

Protection	
Category Total	IP40
Weight	
Weight	3 kg

**Dimensions**

		VEP 30.2CG
Dimensions		
Hight H, 1 Slot	[mm]	241
Width W, 1 Slot	[mm]	306
Depth D, 1 Slot	[mm]	90

**Type Code**

Type Code	Description
VEP30.2CGU-128NN-CAD-128-NN-FW	IndraControl VEP 30 in housing
VEP30.2CGU-128NA-CAD-128-NN-FW	IndraControl VEP 30 in housing with PROFIBUS DP-Master
VEP30.2CGU-128NN-CAD-128-GE-FW	IndraControl VEP 30 in housing with VAS 02.1 keyboard extension
VEP30.2CGU-128NA-CAD-128-GE-FW	IndraControl VEP 30 in housing with PROFIBUS DP-Master and VAS 02.1 keyboard extension

**Firmware**

Type Code	Description	Part No.:
FWA-VEP*03-CWL-01VRS-D0	Firmware for IndraControl VEP xx.3	R911170958
FWA-VEP*04-CW*-09VRS-D0	Firmware for IndraControl VEP xx.4 (in preparation)	R911324144

**Documentation**

Type Code	Description	Part No.:
DOK-SUPPL*-VEP**.3****-PR01-DE-P	VEP	R911323263
DOK-SUPPL*-VEP**.3****-PR01-EN-P	VEP	R911323264
DOK-SUPPL*-VEP*XX.4***-PR01-DE-P	VEP	R911323873
DOK-SUPPL*-VEP*XX.4***-PR01-EN-P	VEP	R911323874

Representante oficial de:

**Rexroth**  
Bosch Group

[Argentina]



Calle 49 N° 5764 - Villa Ballester (B1653AOX) - Prov. de Buenos Aires - ARGENTINA  
Tel: (+54 11) 4768-4242 / Fax: (+54 11) 4849-1212  
Mail: [ventas@nakase.com.ar](mailto:ventas@nakase.com.ar) / Web: [www.nakase.com.ar](http://www.nakase.com.ar)

---

