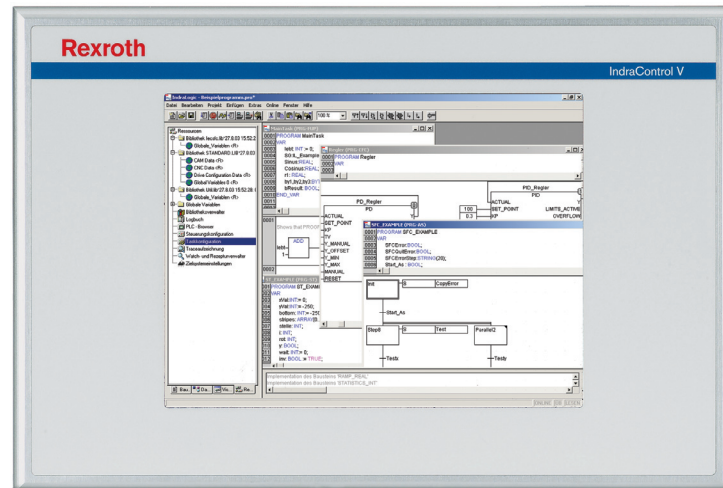


Embedded PC

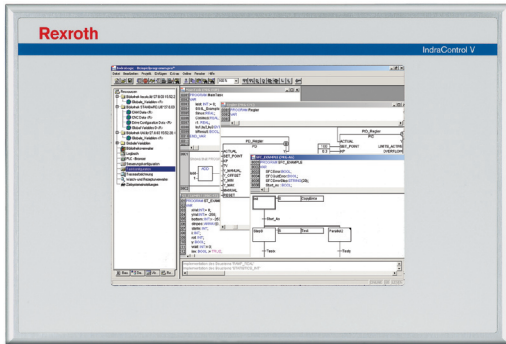
# 8,4" TFT-display and SVGA-Resolution IndraControl VEP 30



Embedded PC

**8,4" TFT-display and SVGA-Resolution ■ IndraControl VEP 30**

Documentation



## Technical data

	VEP 30.3CC	VEP 30.4DP	VEP 30.4EF
<b>Processor</b>			
<b>CPU</b>	Celeron 600MHz (Standard)		Celeron 1GHz (In preparation)
<b>Operating system</b>	Windows CE 4.2 (Standard)	Windows CE 6.0 (In preparation)	
<b>Memory</b>			
<b>Application</b>	256 MB	256 MB	512 MB
<b>Flash size</b>	128 MB		1 GB
<b>compact-flash</b>	2		
	CF sockets		
<b>Slot</b>	1		
<b>Display</b>			
<b>Type</b>	TFT		
<b>Size</b>	8.4 "		
<b>Colours / Greyscales</b>	colours		
<b>Resolution</b>	800 x 600		
<b>Handling</b>			
<b>Type</b>	Through virtual keyboard		
<b>Handling</b>	Touch screen		
<b>Function Keys</b>	0	3	0
<b>Interfaces</b>			
<b>Ethernet</b>	1 x Ethernet TCP/IP (Standard)	2 x Ethernet TCP/IP (Standard)	
<b>USB</b>	2 x USB 2.0 (Standard)		
<b>Seriell</b>	1 x RS232 (Standard)		
<b>Others</b>	1 x Ethernet TCP/IP (Standard)	-	
<b>Fieldbus</b>			
<b>SERCOS III</b>	-	4 x SERCOS III (Standard)	
<b>PROFIBUS DP</b>	1 x PROFIBUS DP-Master (Option)		
<b>Others</b>	-	2 x fieldbus interfaces (Option)	
<b>Electric data</b>			

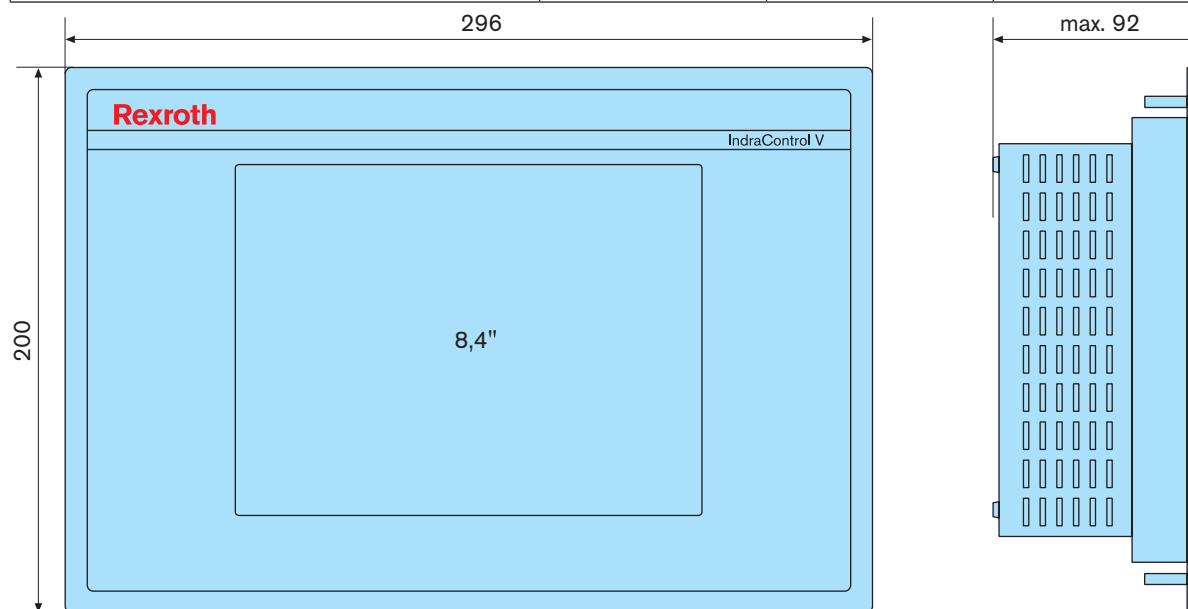
Embedded PC

**8,4" TFT-display and SVGA-Resolution ■ IndraControl VEP 30**

<b>Voltage supply</b>	<b>U</b>	24 V DC	
<b>Min.</b>	<b>U<sub>min</sub></b>	19 V DC	
<b>Max.</b>	<b>U<sub>max</sub></b>	30 V DC	
<b>Input Power</b>	<b>[W]</b>	53	50
<b>USV</b>	Short-time UPS for data backup on compact-flash		
<b>Protection</b>			
<b>Category Total</b>	-	IP54	IP20
<b>Category Front</b>	IP65	-	IP65
<b>Weight</b>			
<b>Weight</b>	2,3 kg	2,3 kg	2,3 kg

**Dimensions**

		VEP 30.3CC	VEP 30.4DP	VEP 30.4EF
<b>Dimensions</b>				
<b>Height H</b>	<b>[mm]</b>	200	0	200
<b>Width W</b>	<b>[mm]</b>	296	0	296
<b>Depth D</b>	<b>[mm]</b>	75	0	88

**Type Code**

Type Code	Description	Part No.:
VEP30.3CCN-256NN-MAD-128-NN-FW	IndraControl VEP 30, visualization	R911170849
VEP30.3CCU-256NA-MAD-128-NN-FW	IndraControl VEP 30, PROFIBUS DP, control component	R911170853
VEP30.3DKN-256NN-MAD-128-CG-FW	IndraControl VEP 30, CG, PROFIBUS DP (in preparation)	R911171626

Embedded PC

**8,4" TFT-display and SVGA-Resolution ■ IndraControl VEP 30**

Type Code	Description	Part No.:
VEP30.4EFU-512NC-MAD-1G0-NN-FW	IndraControl VEP 30, PROFIBUS DP, control component (in preparation)	R911170857
VEP30.4EFN-512NN-MAD-1G0-NN-FW	IndraControl VEP 30, USB, visualization (in preparation)	R911171083
VEP30.4EFU-5123C-MBD-1G0-NN-FW	IndraControl VEP 30, 2 x SERCOS III, control component (in preparation)	R911170825

**Firmware**

Type Code	Description	Part No.:
FWA-VEP*03-CWL-01VRS-D0	Firmware for IndraControl VEP xx.3	R911170958
FWA-VEP*04-CW*-09VRS-D0	Firmware for IndraControl VEP xx.4 (in preparation)	R911324144

**Documentation**

Type Code	Description	Part No.:
DOK-SUPPL*-VEP**3****-PR01-DE-P	VEP	R911323263
DOK-SUPPL*-VEP**3****-PR01-EN-P	VEP	R911323264
DOK-SUPPL*-VEP*XX.4***-PR01-DE-P	VEP	R911323873
DOK-SUPPL*-VEP*XX.4***-PR01-EN-P	VEP	R911323874

Representante oficial de:

**Rexroth**  
Bosch Group

[Argentina]



Calle 49 N° 5764 - Villa Ballester (B1653AOX) - Prov. de Buenos Aires - ARGENTINA  
Tel: (+54 11) 4768-4242 / Fax: (+54 11) 4849-1212  
Mail: [ventas@nakase.com.ar](mailto:ventas@nakase.com.ar) / Web: [www.nakase.com.ar](http://www.nakase.com.ar)

---

